

Specifications

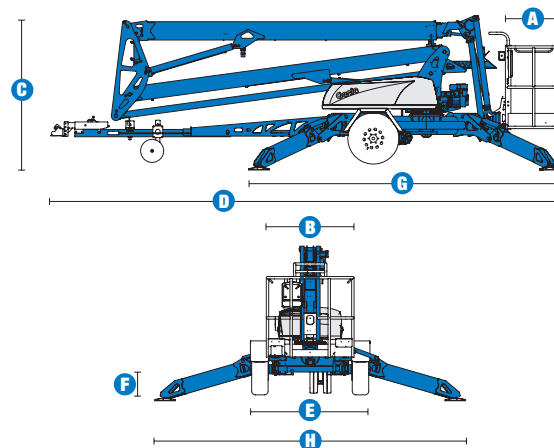
| MODEL | TZ™-50 | |
|---------------------------------------|-------------|---------|
| MEASUREMENTS | US | Metric |
| Working height* | 55 ft 6 in | 17.09 m |
| Platform height | 49 ft 6 in | 15.09 m |
| Entry height | 1 ft 8 in | .51 m |
| Horizontal reach | 29 ft 2 in | 8.89 m |
| Clear outreach | 23 ft 1 in | 7.04 m |
| Up and over clearance | 22 ft | 6.71 m |
| A Platform length | 2 ft 2.8 in | .68 m |
| B Platform width | 3 ft 8 in | 1.12 m |
| C Height - stowed | 6 ft 10 in | 2 m |
| D Length - stowed | 23 ft 6 in | 7.16 m |
| E Width - stowed | 5 ft 6 in | 1.68 m |
| F Ground clearance - center | 10 in | .25 m |
| G Length - outrigger footprint | 14 ft 4 in | 4.37 m |
| H Width - outrigger footprint | 14 ft 4 in | 4.37 m |

| PRODUCTIVITY | | |
|---|--|-----------|
| Lift capacity (ANSI, CSA) - standard | 500 lbs | 227 kg |
| Lift capacity (ANSI, CSA) - rotating platform | 500 lbs | 227 kg |
| Lift capacity (CE/AUS) - standard | 440 lbs | 200 kg |
| Lift capacity (CE/AUS) - rotating platform | 440 lbs | 200 kg |
| Jib boom | 4 ft 1 in | 1.25 m |
| Jib working range | 135° | |
| Self leveling platform | 2.5° standard | |
| Platform rotation option | 160° hydraulic | |
| AC power to platform | standard | |
| Turntable rotation | 359° non-continuous | |
| Outrigger leveling capability | 10° | |
| Drive speed | 0.85 mph | 1.37 km/h |
| Gradeability** | 20% | |
| Towing speed rate | 60 mph | 97 km/h |
| Tongue weight - ANSI, CSA | 400 lbs | 181 kg |
| Tongue weight - CE | 220 lbs | 100 kg |
| Surge and parking brakes | standard | |
| Controls | variable speed system | |
| Tires - ANSI, CSA | ST 225/75 R15 | |
| Tires - CE | 215 R14C | |
| Coupler | 2 in (5.08 cm) hitch coupler standard | |

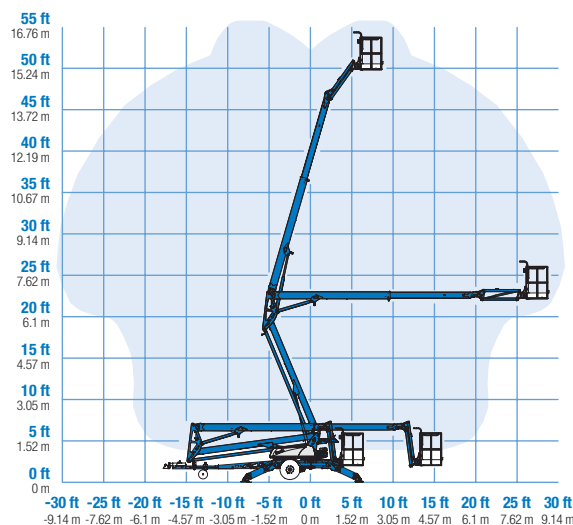
| POWER | | |
|-----------------------------|-------------------------------------|-------|
| Power source - standard | 24 V DC (four 6 V 225 Ah batteries) | |
| Power source - drive option | 24 V DC (four 6 V 244 Ah batteries) | |
| Power source - option | Hybrid DC/Gas Honda 5.5 hp (4.1 kW) | |
| Fuel tank capacity | .95 gal | 3.6 L |
| Hydraulic tank capacity | 4.75 gal | 18 L |
| Hydraulic system capacity | 8.0 gal | 30 L |

| WEIGHT*** | | |
|----------------------|-----------|----------|
| ANSI, CSA, Australia | 4,400 lbs | 1,996 kg |
| CE | 4,464 lbs | 2,025 kg |

STANDARDS COMPLIANCE ANSI A92.2, CSA C225, CE Compliance, AS 1418.10, PB-10-611-03



RANGE OF MOTION TZ™-50



* The metric equivalent of working height adds 2 m to platform height. U.S. adds 6 ft to platform height.

** Gradeability applies to driving on slopes. See operator's manual for details regarding slope ratings.

*** Weight will vary depending on options and/or country standards.

Features

EASILY CONFIGURED TO MEET YOUR NEEDS

PLATFORM OPTIONS

- Aluminum 26.8 x 44 in (.68 x 1.12 m)
- 160° hydraulic platform rotation

POWER OPTIONS

- 24 V DC power source
- Hybrid DC/Gas

DRIVE

- Drive and set option (ANSI, CSA, AUS)
- Drive only (CE)

COUPLER OPTIONS

- 2 in (5.08 cm) ball coupler
- 2.31 in (5.87 cm) ball coupler
- 2.5 in (6.53 cm) I.D. pintle ring coupler
- Combination hitch
- Clevis coupler

TIRE OPTIONS

- ST 225/75 R15 tires (ANSI, CSA)
- 215 R14C tires (CE)

STANDARD FEATURES

MEASUREMENTS

- 55 ft 6 in (17.09 m) working height
- 29 ft 2 in (8.89 m) horizontal reach
- Up to 500 lb (227 kg) lift capacity

PRODUCTIVITY

- Industry leading working envelope
- Extension boom
- Self-leveling platform
- 4 ft jib with 135° working range
- Hydraulic platform rotation
- AC wiring to platform
- Hydraulic outriggers
- Automatic 11° leveling system
- Outrigger interlocks
- Mechanical parking brake
- Hydraulic surge brakes
- Auxiliary pump down
- Combination hitch with coupler lever lock
- Dual jockey wheels
- 359° non-continuous turntable rotation
- Easy to access batteries
- Hour meter
- Tilt alarm / sensor
- Illuminated outrigger indicators

POWER

- 24 V DC power source (four 6V 225 Ah batteries)



OPTIONS & ACCESSORIES

PRODUCTIVITY

- 160° hydraulic platform rotation
- Drive and set option with larger 244 Ah batteries pack
- 2 in (5.08 cm) ball coupler
- 2.31 in (5.87 cm) ball coupler
- 2.5 in (6.53 cm) I.D. pintle ring coupler
- Combination hitch
- Clevis coupler
- Wheel chocks
- Fluorescent tube caddy
- Full size spare tire
- Operational warning beacon package
- Non-marking outrigger footpads
- Battery charge indicator (BCI)
- Tool tray
- Bicycle guard (CE only)

POWER

- Hybrid Honda 5.5 Hp (4.1 Kw) 45 amp charging system option

Genie United States

18340 NE 76th Street
P.O. Box 97030
Redmond, Washington 98073-9730

Telephone **(425) 881-1800**
Toll Free in USA/Canada **800-536-1800**
Fax (425) 883-3475

Genie Europe

The Maltings,
Wharf Road
Grantham NG31 6BH
U.K.

Telephone **+44 (0)1476 584333**
Fax +44 (0)1476 584334

Email: infoeurope@genieind.com

Distributed By:



Kevin Keeter • 817.271.0405

For further information, please contact your local distributor or the Genie Industries sales office listed. Product specifications are subject to change without notice or obligation. The photographs and drawings in this brochure are for illustrative purposes only. Refer to the appropriate Operator's Manual for instructions on the proper use of this equipment. Failure to follow the appropriate Operator's Manual when using our equipment or to otherwise act irresponsibly may result in serious injury or death. Prices and specifications subject to change without notice. The only warranty applicable is the standard written warranty applicable to the particular product and sale. Genie makes no other warranty, expressed or implied. Products and services listed may be trademarks, service marks or trade-names of TEREX Corporation and/or its subsidiaries in the USA and other countries and all rights are reserved. Copyright © 2006 Genie Industries, Inc. "Genie" is a Registered Trademark of Genie Industries, Inc. in the USA and many other countries. Genie is a TEREX Company.